

RECEIVED

MAR 12 2018

WATER RIGHTS PROGRAM

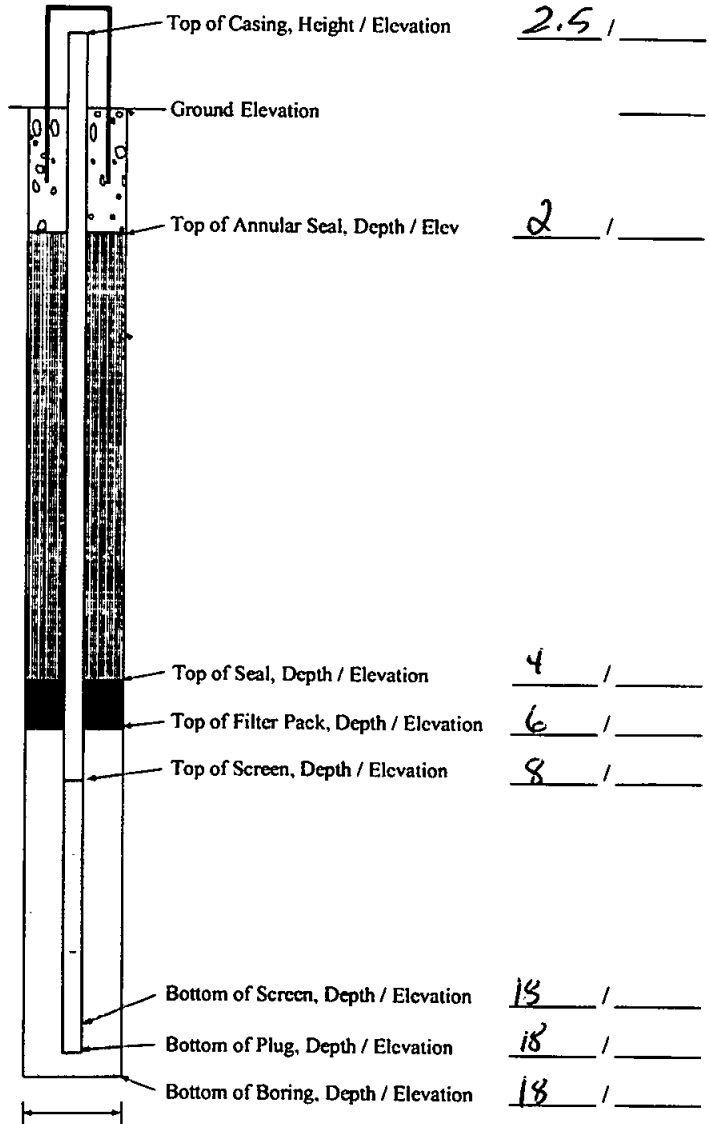
### WELL CONSTRUCTION LOG

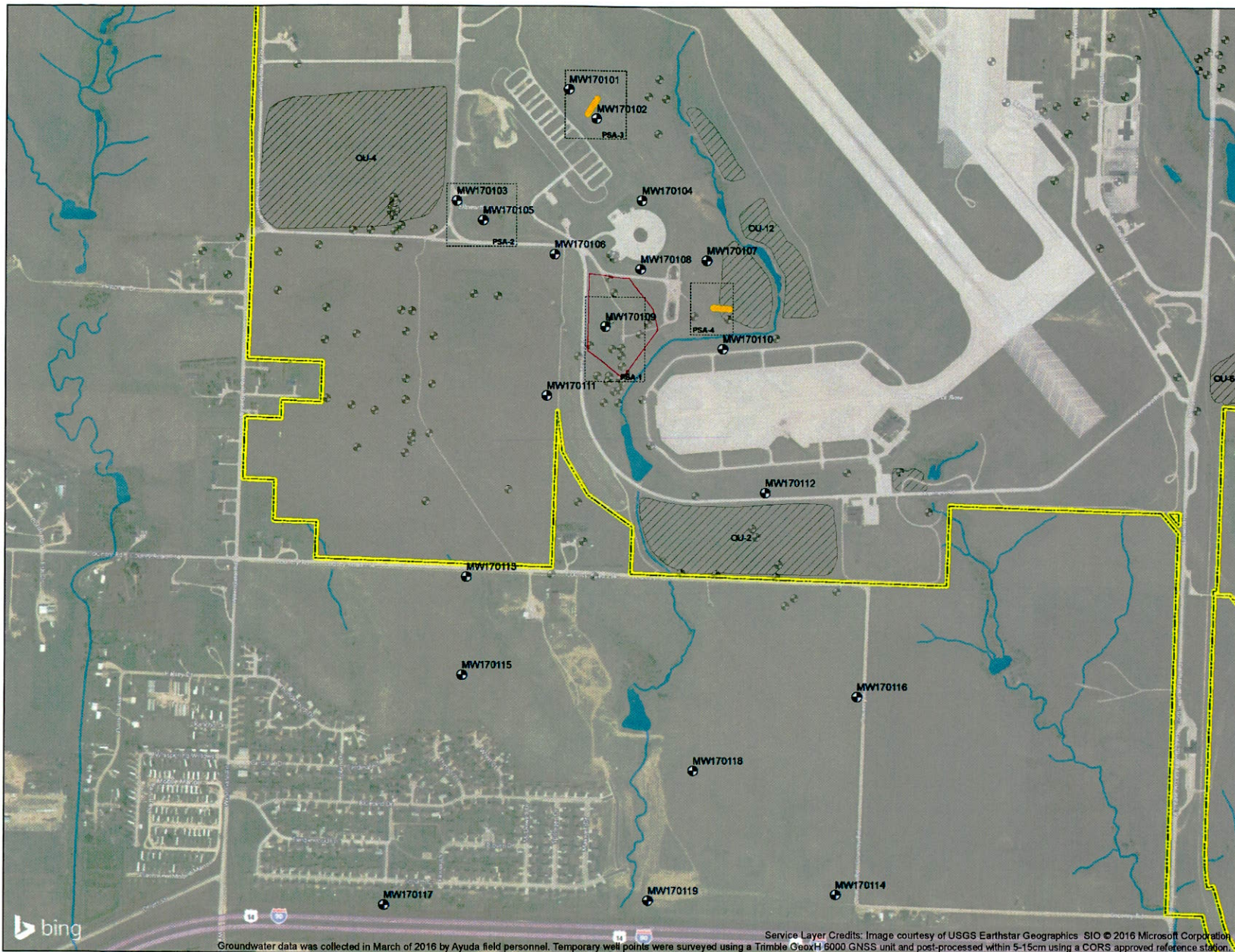
Project Name: EAFB, PFC Delineation, AOC PFC-1  
 Contract/Task Order No.: W912PP-13-D-0011/Task Order 0002  
 Installed By: Peterson Drilling  
 Inspected By: Keith Renner

Well No.: MW170118  
 Site: EAFB  
 Date: 12-3-17  
 Weather: Coal. 40°  
SW 1/4 N61/4 Sec 24 T2N R9E  
AM 3/30/18

Installation Method and Remarks: HSA

Protective Casing Size / Type:	<u>4" Square Steel</u>	Well Seal Type / Lock #	_____
Bumper Post Size / Type	<u>3" Round Steel</u>	Top of Casing, Height / Elevation	<u>2.5 / 1</u>
Surface Seal Type:	<u>Concrete</u>	Ground Elevation	_____
Casing ID/Type:	<u>2" PVC</u>	Top of Annular Seal, Depth / Elev	<u>2 / 1</u>
Annular Seal Type:	<u>H.S. Bentonite</u>	Top of Seal, Depth / Elevation	<u>4 / 1</u>
Seal Type:	<u>3/8" Bentonite Hydro Plug</u> <u>1 Bag</u>	Top of Filter Pack, Depth / Elevation	<u>6 / 1</u>
Filter Pack Type:	<u>16/30 Sand</u> <u>8 bags</u>	Top of Screen, Depth / Elevation	<u>8 / 1</u>
Screen ID/Type/Slot Size:	<u>2" PVC</u> <u>.01 slot</u>	Bottom of Screen, Depth / Elevation	<u>15 / 1</u>
Borehole Diameter	<u>8.5"</u>	Bottom of Plug, Depth / Elevation	<u>18 / 1</u>
		Bottom of Boring, Depth / Elevation	<u>18 / 1</u>





**Ayuda Partners**  
Joint Venture

Ayuda Partners - Joint Venture  
410 Acoma Street, Suite A  
Denver, CO 80204  
303-999-2020



U.S. Army Corps of Engineers  
Albuquerque District

SITE: ELLSWORTH AIR FORCE BASE

PROJECT: AOC PFC - 1  
PERFLUORINATED COMPOUND  
DELINEATION  
STAGE 2 SURVEY  
W912PP-13-D-0011, 0002

TITLE: STAGE 2  
SURVEY RESULTS

- LEGEND:
- Stage 2 Survey by AE2S
  - Monitoring Well
  - Existing Monitoring Well
  - Ellsworth AFB Boundary
  - Surface Water
  - Landfill Covers
  - Structures
  - Paved Surface

SCALE: 1:9,000  
0 250 500 1000  
Feet  
NAD 1983 StatePlane South Dakota South FIPS 4002 Feet

DRN/MOD BY:	DATE:	FIGURE:
ADS	2/23/2018	1
	REV: 6	

Groundwater data was collected in March of 2016 by Ayuda field personnel. Temporary well points were surveyed using a Trimble GeoXH 6000 GNSS unit and post-processed within 5-15cm using a CORS approved reference station. Service Layer Credits: Image courtesy of USGS Earthstar Geographics SIO © 2016 Microsoft Corporation