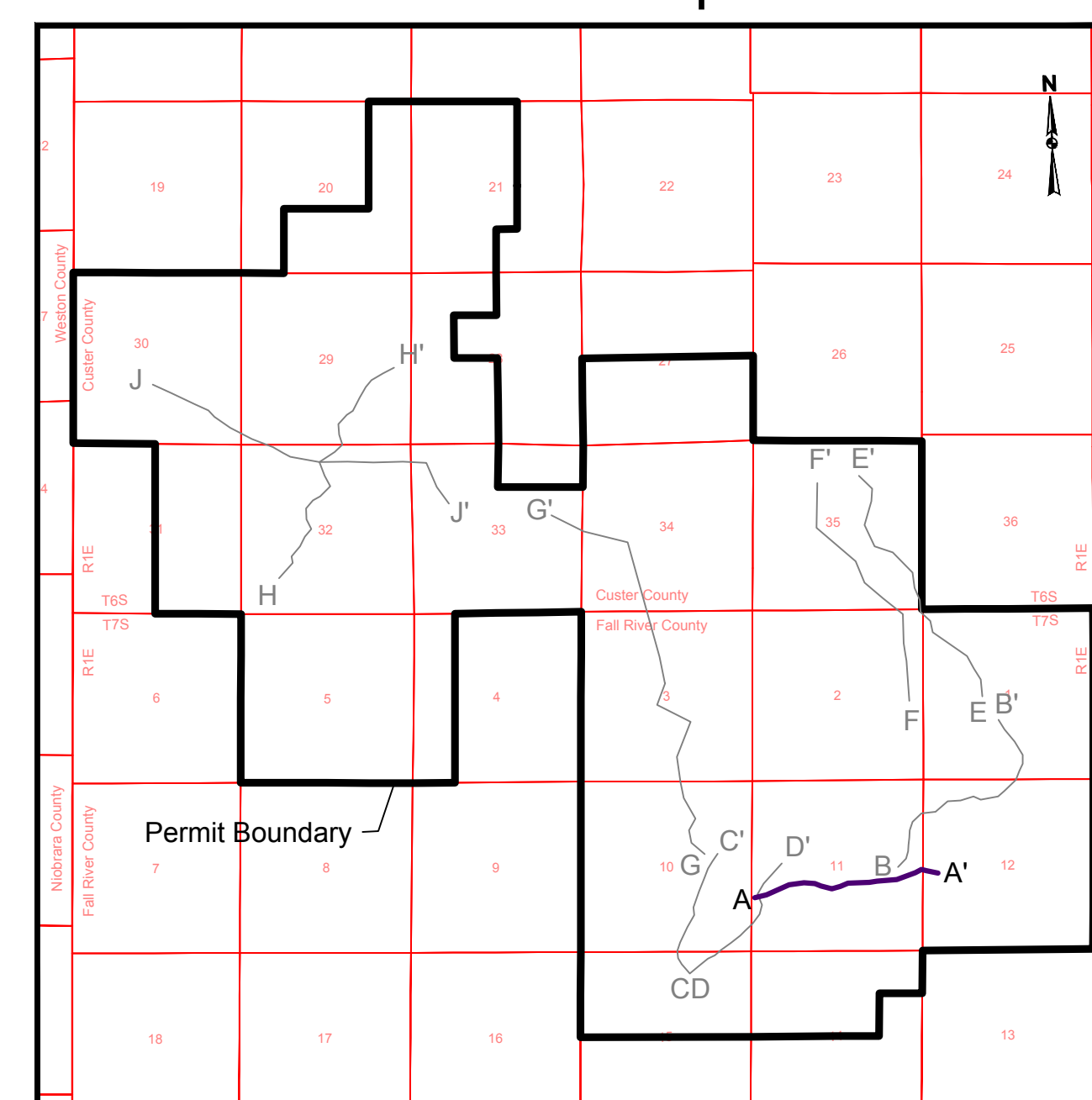
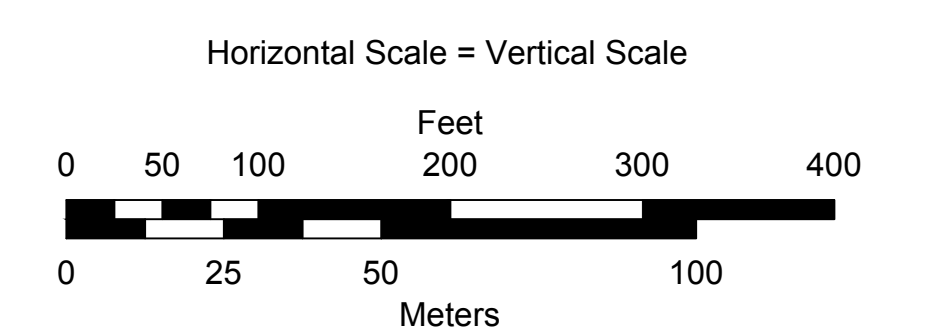


Index Map



Legend

- Ore
- Confining Clays and Shale
- Sand



This plate is provided to fulfill the requirements of ARSD 74:29:02:11(2).

CHECK SCALES DATE: 12-Sep-2012 BY: R. Lichnovsky	REVISIONS # DRAWN CHECKED APPROVED DATE		 PowerTech (USA) Inc. Plate 3.2-13 Cross Section A - A' Dewey-Burdock Project <small>15000' NAD 27, South Dakota State Plane South (feet)</small>
	PREPARED BY: F. L. Lichnovsky CHECKED BY: P. Dewey-Burdock		