



# RTCR

## Revised Total Coliform (RTCR) Rule

### Requirements for All Public Water Systems

#### WHO DOES THIS FACTSHEET APPLY TO?

All public water systems (PWSs) must conduct total coliform (TC) sampling **MONTHLY**.

#### RTCR What to Do?

**Step 1:**  
Develop/Update your  
sample siting plan

**Step 2:**  
Collect your drinking  
water samples

**Step 3:**  
What to do after you  
receive your drinking  
water sample results?



FOR ASSISTANCE,  
PLEASE CONTACT-

SD Drinking Water  
Program  
605-773-3754

April 1, 2016: All PWSs must comply with the RTCR.

SD Drinking Water Program (DWP) 605-773-3754 [denr.sd.gov/des/dw/dwhome.aspx](http://denr.sd.gov/des/dw/dwhome.aspx)

#### STEP 1: DEVELOP/UPDATE YOUR SAMPLE SITING PLAN

Contact SD DWP for assistance.

By March 31, 2016, you must have a sample siting plan for RTCR monitoring. The sample siting plan is subject to review and revisions by SD DWP. You can update your Total Coliform Rule (TCR) sample siting plan that was previously submitted to meet the RTCR requirements. Your RTCR sample siting plan must include:

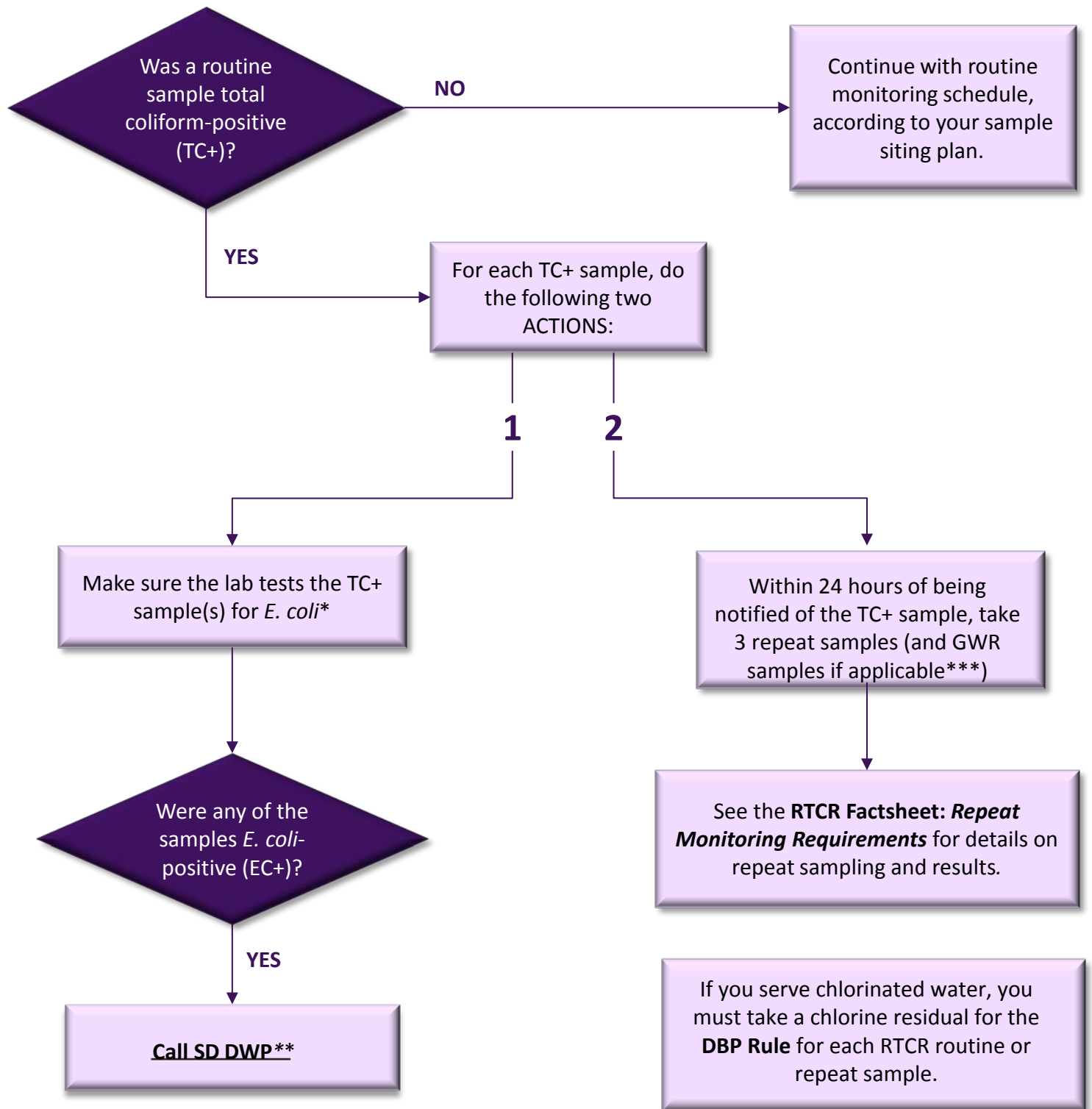
- **ROUTINE AND REPEAT SAMPLING LOCATIONS:** The location sites should be in accessible areas at a customer's premise, dedicated sampling station or other designated compliance sampling location. Three repeat sites per routine site are needed.
- Your **ROUTINE COLLECTION SCHEDULE** (e.g., PWS X will collect routine total coliform samples every calendar month, approximately every 30 days)
- **GROUNDWATER RULE SAMPLES:** Any sampling location that will be used to meet the Groundwater Rule triggered source water monitoring requirements must be included. One site per groundwater source is needed.
- **CONTINUE TO UPDATE YOUR PLAN TO REFLECT CHANGES:** The sample siting plan is a living document and should be updated to reflect future changes at your PWS such as:
  - Major changes in population.
  - A new or changed water source.
  - Infrastructure changes, such as a change in layout or geographic area that affects the layout of the distribution system or pressure zones, or if there has been a change in disinfection or other treatment.

#### STEP 2. YOUR RTCR ROUTINE SAMPLING REQUIREMENTS

You must:

- **COLLECT THE CORRECT NUMBER** of routine drinking water samples every calendar month, starting April 1, 2016.
- **SEND YOUR SAMPLE TO A STATE-CERTIFIED LAB** that performs total coliform drinking water analysis.
  - Remember that the sample holding time must not exceed 30 hours, so the lab must begin analyzing the drinking water sample no later than the 30th hour from the collection time. If sent thru the mail, the samples must arrive over night.

## STEP 3. WHAT TO DO AFTER YOU RECEIVE YOUR SAMPLE RESULT?



### NOTES

\*State-approved labs should test for *E. coli* automatically when any (routine or repeat) sample is TC+.

\*\*Call SD DWP on the same day you learn of the EC+ result, or by the end of the next business day or 605-280-6831 on weekends and tell them you received an EC+ result.

\*\*\*The Groundwater Rule (GWR) applies to any water system with its own wells (take triggered samples) and any system served by another groundwater system (tell supplying system about TC+ sample).