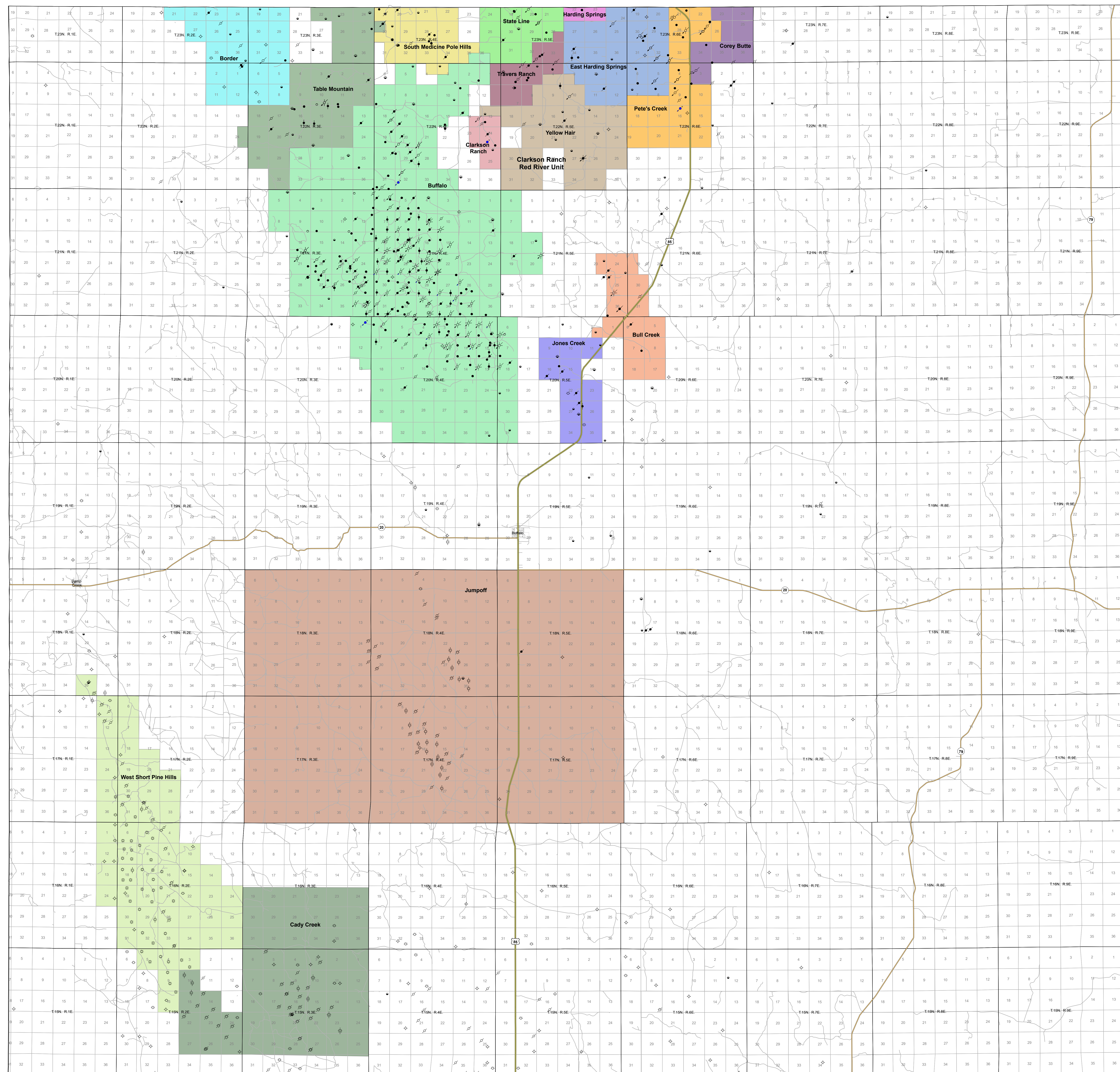


# Oil and Gas Well, Test Hole, and Permit Locations with Field Boundaries, Harding County, SD



## EXPLANATION

### Oil Fields

- Border Field
- Buffalo Field
- Bull Creek Field
- Clarkson Ranch Field
- Corey Butte Field
- East Harding Springs Field
- Harding Springs Field
- Jones Creek Field
- Pete's Creek Field
- South Medicine Pole Hills Field
- State Line Field
- Table Mountain Field
- Travers Ranch Field
- Yellow Hair Field

### Well Symbols

- New permit
- Never drilled
- Gas well - producing
- Gas well - plugged and abandoned
- Gas well - temporarily abandoned
- Oil well - producing
- Oil well - plugged and abandoned
- Oil well - temporarily abandoned
- Dry hole
- Dry hole - gas show
- Dry hole - oil show
- Dry hole - oil and gas show
- Reservoir monitoring well
- UIC - injecting
- UIC - plugged and abandoned
- UIC - temporarily abandoned
- UIC - water supply for injection

### Gas Fields

- Cady Creek Field
- Jumpoff Field\*
- West Short Pine Hills Field

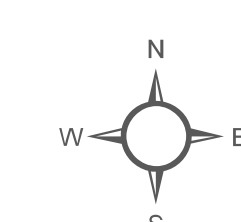
### Other Symbols

- US highway
- State highway
- Road

\* The Jumpoff Field as delineated was created for the purposes of reporting production data only. The Board of Minerals and Environment has not officially designated this area as a field.

Scale: 1:100,000  
0 1 2 3 4 5 6 Miles

0 1 2 3 4 5 6 Kilometers



Compiled by DANR's Geological Survey Program, May 2021

The State of South Dakota (State) makes no claims, promises, or guarantees about the absolute accuracy, completeness, or adequacy of this data. The use of this data is limited to informational and educational purposes only. This data is provided as is and in no event or circumstance shall the State, nor any agency, employee or representative be liable for any damages or losses, including without limitation, damages resulting from lost profits or revenue, claims by third parties or any special, incidental, punitive or consequential damages, arising out of the use of this data. The State may make changes to information at any time to add, update, or correct the information provided. Any errors or omissions should be reported for investigation. Any person or entity that relies on information obtained from this map does so at his or her own risk.