

GOOD NEIGHBOR PROJECTS

Good Neighbor Authority (GNA) projects began in South Dakota in September 2019. GNA projects allow the state to assist the Black Hills National Forest (BHNH) increase the pace and scale of forest management on National Forest System lands. Through an agreement with BHNH, work has been completed on projects for the Hell Canyon, Mystic, and Northern Hills Ranger Districts. Tasks have included timber sale unit layout, boundary marking and geospatial mapping, leave-tree marking, timber inventory collection, and timber stand improvement. Most of the work in FY2020 was associated with timber sale preparation, but also included fuels mitigation and forest health projects on the Mystic Ranger District, and timber stand improvement in the Northern Hills.

The Pennington Conservation District provides a crew to help implement the GNA projects.

By the Numbers -	
Total Units	198
Unit Layout Completed (acres)	4,465
Unit Boundary Painted (acres)	3,916
Unit Boundary GPSed (acres)	4,483
Leave-Tree Marking Completed (acres)	1,060
Tree Tally Area for Right-of-Way Timber Sale – Sheridan Lake Rd. (acres)	170
Cruise Plots Completed (Assisted Forest Service Personnel)	9

#	Project Name	Ranger District	Dates of Work
1	Blacktail Timber Sale	Hell Canyon	9/4/2019-12/6/2019
2	Oreville Timber Sale	Mystic	12/9/2019-
3	Sheridan Lake Rd. Timber Sale	Mystic	3 days in February & March 2020
4	Oblivion Timber Sale	Mystic	3/11/2020-
5	Greyhound/Toskin/Hisega/Placerville Fuels Mitigation	Mystic	3/25/2020-4/20/2020
6	Shack Timber Sale	Mystic	4/20/2020-8/5/2020



Natural Resource Conservation

The purpose of the Resource Conservation Program is to provide for the conservation of soil and water resources within the state; to prevent or control soil erosion; to prevent or minimize flood damage; and to conserve, develop, utilize, and preserve the natural resources of this state. In addition, RCF provides administrative and technical assistance to the State Conservation Commission and conservation districts to implement the goals within the Coordinated Plan for Natural Resources Conservation (Coordinated Plan).

In FY2020, 43 grant applications were received requesting \$956,444. The Conservation Commission awarded

funding to 39 projects for a total of \$638,890. For more information, see the attached grants table.

There were 13 projects involving 155 partnerships between conservation districts funded in FY 2020.

Projects included best management practices targeting improvements to grasslands, cropland, wetlands, and shelterbelts, as well as other surface and ground water quality improvements. Other projects included multi-district resource conservation information and education.

In FY2020, nine producers nominated by five conservation districts received the Soil Conservation Award.

CCGA Project

RCF received funding through the Natural Resource Conservation Service (NRCS) Collaborative Conservation Grant and Agreement (CCGA) in FY2019. This partnership allowed RCF to work with landowners to develop windbreak renovation plans within an eight-county area (Sanborn, Jerauld, Aurora, Davison, Hanson, Hutchinson, Douglas, and Yankton).

In FY2020 a targeted brochure was created specific to Aurora County. As a result of this outreach, 45 producers have contacted RCF with 33 producers having plans completed. A total of 53 windbreak restoration plans were completed with additional producers interested in having plans written. Most producers have indicated interest and willingness to act on created plans if cost share funds are available.

RCF is working with partners to develop cost-sharing opportunities for producers in the eight county area. A goal for 2021 is to obtain grant funds for a FY2022 cost share program.



523 E. Capitol Ave
Pierre, SD 57501-3182
605.773.3623 ph
605.773.4003 fax
sdda.sd.gov/conservation-forestry

Non-Commercial Thinning

Rural Foresters provide technical assistance to landowners and other entities regarding management of private lands. In FY2020, foresters worked with landowners to complete forest thinning work on 441 acres.

Thinning forests in the Black Hills reduces fuel loads and helps prevent large-scale forest disturbances such as wildfire and insect and disease outbreaks. Thinning also reduces competition to improve the health and vigor of residual trees and allows for more understory vegetation for wildlife habitat and domestic grazing.



South Dakota Tree Farm Program Audit

RCF certifies that private forestland is being sustainably managed through the Tree Farm Program. This internationally recognized certification program is part of the American Tree Farm System (ATFS) and is sponsored in this state by the South Dakota Family Forest Association (SDFFA). SDFFA currently has 119 certified private forest properties totaling over 18,000 acres, mostly in the Black Hills. Every four years ATFS requires a third-party audit of certified Tree Farms in South Dakota to verify that they are meeting certification standards for sustainability. A sample of 10 Tree Farms was chosen by ATFS for the audit in 2020. The results of the audit showed all properties met or exceeded ATFS standards. Seven of the ten audited properties receive technical assistance from RCF.

In accordance with Federal civil rights law and US Department of Agriculture (USDA) civil rights regulations and policies, the USDA, its Agencies, offices, and employees, and institutions participating in or administering USDA programs are prohibited from discriminating based on race, color, national origin, religion, sex, gender identity (including gender expression), sexual orientation, disability, age, marital status, family/parental status, income derived from a public assistance program, political beliefs, or reprisal or retaliation for prior civil rights activity, in any program or activity conducted or funded by USDA (not all bases apply to all programs). Remedies and complaint filing deadlines vary by program or incident.

Persons with disabilities who require alternative means of communication for program information (e.g., Braille, large print, audiotope, American Sign Language, etc.) should contact the responsible Agency or USDA's TARGET Center at (202) 720-2600 (voice and teletype) or contact USDA through the Federal Relay Service at (800) 877-8339. Additionally, program information may be made available in languages other than English.

To file a program discrimination complaint, complete the USDA Program Discrimination Complaint Form, AD-3027, found online at [How to File a Program Discrimination Complaint](#) and at any USDA office, or write a letter addressed to USDA and provide in the letter all of the information requested in the form. To request a copy of the complaint form, call (866) 632-9992. Submit your completed form or letter to USDA by: (1) mail: US Department of Agriculture, Office of the Assistant Secretary for Civil Rights, 1400 Independence Avenue, SW, Washington, D.C. 20250-9410; (2) fax: (202) 690-7442; or (3) email: program.intake@usda.gov.

For more information about the programs and projects discussed in this publication visit sdda.sd.gov/conservation-forestry/. 250 copies of this publication were printed by Simpsons Printing for the Department of Agriculture, Division of Resource Conservation and Forestry at a cost of \$1.32 per copy.



South Dakota Department of Agriculture
Resource Conservation & Forestry Division

Annual Report

FISCAL YEAR 2020 ACCOMPLISHMENTS

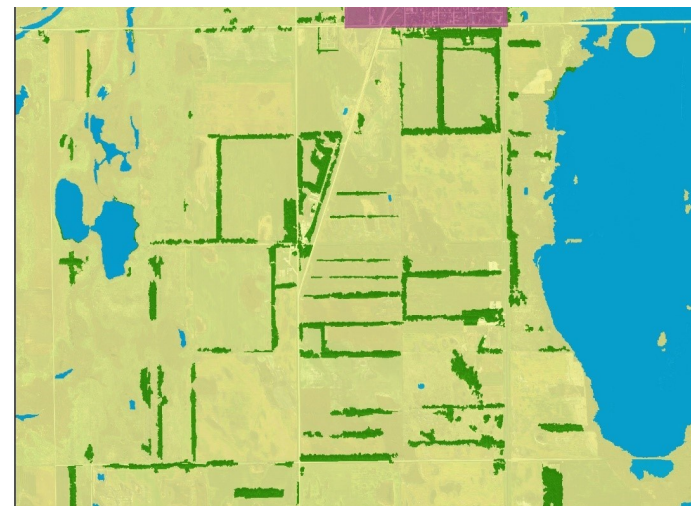


INVASIVE PLANT PROGRAM

The Invasive Plant Program continued in FY2020. Four of the eligible 12 counties applied for funding of five projects, requesting more funds than were available for the fourth time in the last five years. All four Weed and Pest boards have requested reimbursement, using the entire \$20,000. This year 1,735 acres were treated for noxious weeds, such as thistles, hounds-tongue, hoary cress, common tansy, and common mullein.

Forest Health Technical Assists

Combined technical assists related to forest health totaled 1,766 in FY2020. This year, ash trees were the subject of 28% of all technical assists, juniper followed at 19% and pine was a close third at 17%. Other common tree genera submitted as samples included, but were not limited to, spruce, maples, elms, catalpa, hackberry, honeylocust crabapple, and walnut. Emerald ash borer, various Juniper blights, and pine engraver beetles were the most common requests for technical assistance related to forest health.



Field and farmstead windbreaks in Brown County.

Mapping Trees Outside of Forests

Trees Outside Forests image inventory (TOFii) is a procedure developed by the USDA Forest Service for mapping and inventorying small tree groupings that are often excluded from the nation's forest inventory. These often include field windbreaks with five rows of trees or less, narrow riparian areas, and wooded draws. TOFii is



Pine engraver beetle damage on slash (SDDA, 2017)

part of the Great Plains Tree and Forest Invasive Initiative (GPII2). It utilizes high resolution aerial imagery as input data. Geographic Information System (GIS) ArcMap software is used to view aerial imagery and edit files.

Despite the small size of these tree groupings, they are a critical resource—providing erosion control and wildlife habitat, improving water quality, livestock and farmsteads, and sequestering carbon. This inventory will give us a better understanding of the extent and condition of these important resources and help us target areas for windbreak renovation projects.

This project was made possible through a partnership with the US Forest Service, and the Northern Plains states of North Dakota, Nebraska, and Kansas.

This Issue

Invasive Plants, TOFii & Forest Health P. 1

Community Forestry, EAB, & Contests P. 2

GNA, Conservation & CCGA p. 3

Grants Awarded in FY2020 P. 4 & 5

Rural Forestry P. 6

CONSERVATION
SPEECH CONTEST

The 59th annual State Finals of the Resource Conservation Speech Contest was held via Zoom on May 23, 2020.

Winning first place and a \$1,100 scholarship was Matea

Gordon. Gordon was sponsored by the Lawrence Conservation District and is a sophomore at Sturgis Brown High School. She is the daughter of Bruce and Kindra Gordon of Whitewood.

Receiving second place and a \$750 scholarship was Taylor

Storbakken. Storbakken was sponsored by the Marshall Conservation District and is a junior at Britton-Hecla. She is the daughter of Lynn and Rodell Storbakken.

Receiving third place and a \$450 scholarship was Hannah

Hetland. Hetland was sponsored by the Davison Conservation District and is a senior at Mitchell High School. She is the daughter of Paul and Deanna Hetland.

Scholarships totaling \$2,300 for the winners were provided by

Touchstone Energy Cooperatives of South Dakota. The contest was co-sponsored by the South Dakota Department of Agriculture, the US Fish and Wildlife Service, and the South Dakota Association of Conservation Districts.

Community Forestry
in South Dakota

Over 77% of South Dakotans live
in communities alongside trees
and forests.

Tree City USA. In FY2020, 32 communities in South Dakota qualified for Tree City USA designation, and four college campuses for Tree Campus USA. This designation highlights a community's dedication to caring for and preserving their community trees.

Arbor Day. Amidst the challenges of the year, Resource Conservation & Forestry (RCF) staff was still able to present at 15 Arbor Day commemorations in Tree City communities. A total of 35 presentations were completed by RCF regarding tree care, selection, and maintenance. In addition, RCF staff administered the Arbor Day Essay contest and the Arbor Day Poster Contest.

First through third place essay contest winners were awarded a cash prize, whereas the top three poster contest winners also received a cash prize. The top 12 poster submissions are used in the annual Arbor Day Poster Contest Calendar. The teachers of the first place winners from both contests are also awarded a cash prize for purchasing school supplies.

Community Tree Inventories. RCF began offering complimentary use of a tree inventory system called TreePlotter. The state has a contract that allows for the full use of TreePlotter to small and midsize communities to inventory and help them better manage their community trees. RCF

2019 CAPITOL CHRISTMAS TREE	
TREE SPECIES:	
Colorado blue spruce	
DONATED BY:	
Andrew Forest and Ciara Rounds	
FROM:	
Pierre, SD	
DECORATED BY:	
South Dakota Realtors Association	
THEME:	
A Hometown Christmas	

foresters have begun training and working with the following communities to utilize TreePlotter: Dakota Dunes, Edgemont, Fort Pierre, Buffalo, Bison, Newell, Summerset, and Western Dakota Technical school. Ninety-one community inventories have been entered into TreePlotter.

Challenge Grants. The Fall 2020 Challenge grant round awarded \$13,500 in funding to various projects involving tree plantings. These tree plantings will improve South Dakota communities by making public venues more enjoyable and sustainable. See the Grants Funded in FY2020 table for more information.

Emerald Ash Borer in South Dakota: Slowing the Spread

Emerald Ash Borer (EAB) was confirmed in two more communities in FY2020. Canton is located about 20 miles southeast of Sioux Falls. A local arborist reported ash trees with EAB symptoms in May, and it was confirmed by Dr. John Ball. An infestation was identified in Worthing, a town between Sioux Falls and Canton. This population was discovered as part of a driving survey of the community as an on-going effort to survey the smaller communities in Lincoln, Minnehaha, and Turner Counties. This year RCF partnered with The Nature Conservancy (TNC) and 16 other states to promote the Don't Move Firewood campaign. RCF leased two billboards around Sioux Falls and used a TNC-designed poster that is consistent with posters in other states.



FY2020 Arbor Day Poster Contest 1st Place
Winner, Sienna Weiman of Sacred Heart School in



County	Grant Recipient	Program	Project Name	Awarded	Local Match	Other Funding	Total Project Costs
Bennett	Bennett Conservation District	CSW	Bennett/badlands Tree Planting	\$ 14,044.00	\$ 16,455.00		\$ 30,499.00
Bon Homme	Bon Homme Conservation District	CSW	Conservation Enhancement	\$ 20,000.00	\$ 33,750.00		\$ 53,750.00
Brookings	South Dakota State University	JPA	Extension Forester	\$ 80,000.00	\$ -	\$ 80,000.00	\$ 160,000.00
Brule-Buffalo	Brule-Buffalo Conservation District	CSW	Renovation & Tree Planting	\$ 36,000.00	\$ 40,000.00		\$ 76,000.00
Butte	Butte Conservation District	CSW	Envirothon	\$ 20,000.00	\$ 33,600.00	\$ 68,400.00	\$ 122,000.00
Charles Mix	Charles Mix Conservation District	CSW	Brush Management	\$ 30,000.00	\$ 35,000.00		\$ 65,000.00
Charles Mix	Charles Mix Conservation District	CSW	Shelterbelts	\$ 35,000.00	\$ 38,000.00		\$ 73,000.00
Clark	Clark Conservation District	CSW	Cover Crops	\$ 5,632.00	\$ 9,643.00		\$ 15,275.00
Clark	Clark Conservation District	CSW	Shelterbelts	\$ 15,845.64	\$ 33,211.92		\$ 49,057.56
Clay	Clay Conservation District	CSW	Conservation Education	\$ 3,000.00	\$ 3,000.00		\$ 6,000.00
Clay	Clay Conservation District	CSW	Shelterbelts	\$ 10,540.00	\$ 16,260.00		\$ 26,800.00
Custer	Custer Conservation District	CSW	Thinning for a Healthier Forest	\$ 21,300.00	\$ 21,300.00		\$ 42,600.00
Davison	Davison Conservation District	CSW	Cover Crops/Grazing	\$ 40,000.00	\$ 47,174.00		\$ 87,174.00
Davison	Davison Conservation District	CSW	Brush Management	\$ 10,000.00	\$ 10,000.00		\$ 20,000.00
Day	Day Conservation District	CSW	NE Glacial Lakes	\$ 20,410.00	\$ 88,937.00	\$ 174,906.00	\$ 284,253.00
Deuel	City of Gary	UCF	Tree Maintenance	\$ 1,000.00	\$ 1,000.00		\$ 2,000.00
Douglas	Douglas Conservation District	CSW	Tree and Fabric Project	\$ 20,000.00	\$ 20,000.00		\$ 40,000.00
Fall River	Fall River Conservation District	CSW	Keep it Covered	\$ 4,478.00	\$ 6,139.00		\$ 10,617.00
Fall River	Fall River County Weed & Pest Board	WPC	Fall River BHFS Invasive Weed Assistance	\$ 2,000.00	\$ 2,000.00		\$ 4,000.00
Fall River	Fall River County Weed & Pest Board	WPC	Fall River BGNIG Invasive Weed Assistance	\$ 3,000.00	\$ 3,000.00		\$ 6,000.00
Gregory	Gregory Conservation District	CSW	County Projects 6	\$ 27,500.00	\$ 27,500.00		\$ 55,000.00
Gregory	City of Burke	UCF	Burke City Tree Planting Project	\$ 5,000.00	\$ 2,800.00	\$ 2,200.00	\$ 10,000.00
Hamlin	Hamlin Conservation District	CSW	2020 SDACDE Conservation Promotion	\$ 6,200.00	\$ 6,200.00		\$ 12,400.00
Hanson	Hanson Conservation District	CSW	Shelterbelt renovations	\$ 20,000.00	\$ 25,000.00		\$ 45,000.00
Hanson	Hanson Conservation District	CSW	Brush Management	\$ 7,500.00	\$ 8,300.00		\$ 15,800.00
Hanson	Hanson Conservation District	CSW	Cover Crops	\$ 18,500.00	\$ 20,300.00		\$ 38,800.00
Hughes	Hughes Conservation District	CSW	Tree Initiative	\$ 35,000.00	\$ 48,250.00		\$ 83,250.00
Hyde	Hyde Conservation District	CSW	Hyde/Hand Enhancements 7	\$ 25,000.00	\$ 24,850.00		\$ 49,850.00
Jackson	Jackson Conservation District	CSW	Shelterbelt Establishment	\$ 5,365.00	\$ 5,365.00		\$ 10,730.00
Jerauld	Jerauld Conservation District	CSW	Windbreaks	\$ 13,750.00	\$ 11,050.00		\$ 24,800.00
Jones	Jones Conservation District	CSW	Shelterbelt Establishment	\$ 12,891.43	\$ 25,309.01		\$ 38,200.44
Kingsbury	Kingsbury Conservation District	CSW	Conservation Practices	\$ 15,000.00	\$ 15,000.00		\$ 30,000.00
Kingsbury	Kingsbury Conservation District	CSW	Urban Forestry	\$ 9,000.00	\$ 9,000.00		\$ 18,000.00
Lawrence	City of Spearfish	UCF	Tree Inventory	\$ 5,000.00	\$ 5,000.00		\$ 10,000.00
Lyman	Lyman County Weed & Pest Board	WPC	Grassland Road Spray	\$ 6,500.00	\$ 6,5000.00		\$ 13,000.00
McCook	McCook Conservation District	CSW	Shelterbelts	\$ 7,900.00	\$ 8,100.00		\$ 16,000.00
McPherson	McPherson Conservation District	CSW	2020 Tree Project	\$ 20,000.00	\$ 18,648.19		\$ 38,648.19
Meade	City of Piedmont	UCF	Piedmont Tree Beautification	\$ 2,000.00	\$ 2,000.00		\$ 4,000.00
Meade	City of Summerset	UCF	UCF Comprehensive	\$ 1,000.00	\$ 1,000.00		\$ 2,000.00
Meade	Meade County Weed & Pest Board	WPC	Elk/Bear Butte Creek Watershed Enhancement	\$ 3,500.00	\$ 3,5000.00		\$ 7,000.00
Mellette	Mellette Conservation District	CSW	2020 Tree Grant	\$ 8,000.00	\$ 8,000.00		\$ 16,000.00
Miner	Miner Conservation District	CSW	Conservation Awareness	\$ 1,200.00	\$ 950.00	\$ 350.00	\$ 2,500.00
Miner	Miner Conservation District	CSW	Soil Health Improvement	\$ 24,721.00	\$ 27,812.00		\$ 52,533.00
Minnehaha	Minnehaha Conservation District	CSW	Wildlife Habitat Project	\$ 9,868.00	\$ 38,561.00		\$ 48,429.00
Pennington	City of Wall	UCF	Urban and Community Forestry Grant	\$ 1,000.00	\$ 1,000.00		\$ 2,000.00
Pennington	South Dakota Project Learning Tree	SPC	A Forest for Every Classroom	\$ 12,000.00	\$ 12,000.00		\$ 24,000.00
Perkins	Pennington County Weed & Pest Board	WPC	Pennington County Weed Reduction	\$ 5,000.00	\$ 5,000.00		\$ 10,000.00
Perkins	Perkins Conservation District	CSW	NW Area Tree Planting	\$ 17,390.62	\$ 45,359.50		\$ 62,750.12
Stanley	Stanley Conservation District	CSW	Tree Planting	\$ 9,314.00	\$ 9,517.00		\$ 18,831.00
Stanley	City of Fort Pierre	UCF	Tree Inventory	\$ 4,000.00	\$ -	\$ 4,000.00	\$ 8,000.00
Todd	Todd Conservation District	CSW	2020 Multi-Practice Grant	\$ 25,000.00	\$ 31,225.00	\$ 8,929.00	\$ 65,154.00
Union	Union Conservation District	CSW	Conservation Education	\$ 3,000.00	\$ 3,000.00		\$ 6,000.00
Union	Union Conservation District	CSW	Trees/fabric	\$ 10,540.00	\$ 10,540.00		\$ 21,080.00
Walworth	City of Mobridge	UCF	Greenwood Memorial Trees	\$ 1,000.00	\$ 1,000.00		\$ 2,000.00
Totals				\$ 750,889.69	\$ 906,106.62	\$ 338,785.00	\$ 1,995,781.31
Program Key:				CSW—Coordinated Natural Resources Conservation Grants			
				WPC—Weed and Pest County Grants			
				SPC—Special Project Grants			
				UCF—Urban and Community Forestry Grants			
				JPA—Joint Powers Agreement			

New Grants Funded in FY2020