

Wharf EXNI Water Monitoring Locations



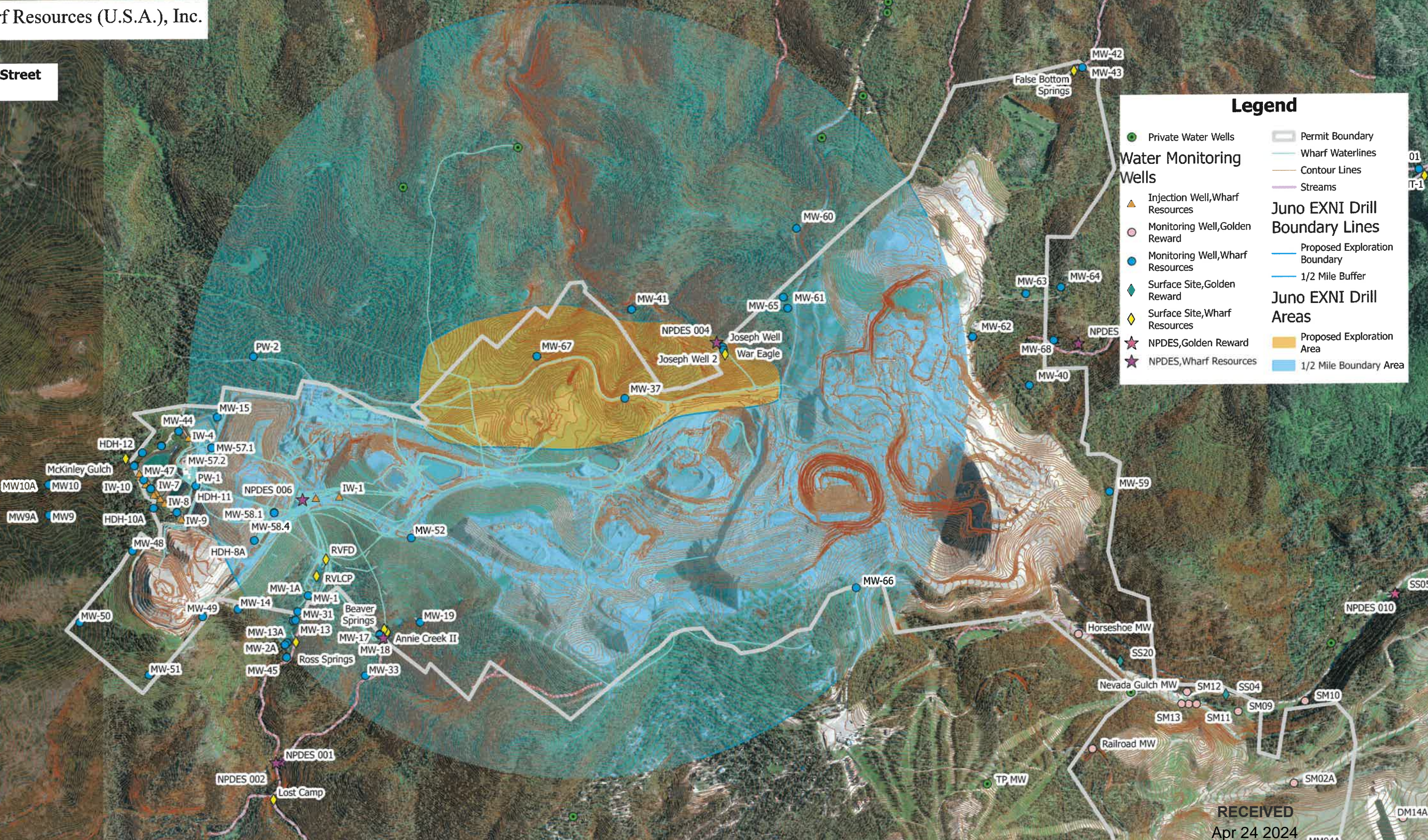
Wharf Resources (U.S.A.), Inc.

Drawn By: Blair J. Street
Date: 4/17/2024



Legend

Private Water Wells	Permit Boundary
Injection Well, Wharf Resources	Wharf Waterlines
Monitoring Well, Golden Reward	Contour Lines
Monitoring Well, Wharf Resources	Streams
Surface Site, Golden Reward	Juno EXNI Drill Boundary Lines
Surface Site, Wharf Resources	Proposed Exploration Boundary
NPDES, Golden Reward	1/2 Mile Buffer
NPDES, Wharf Resources	Juno EXNI Drill Areas
	Proposed Exploration Area
	1/2 Mile Boundary Area



RECEIVED
Apr 24 2024
MINERALS, MINING, &
SUPERFUND PROGRAM